

POWER QUALITY MANAGEMENT SYSTEM

SCADA communication for BELUK BLR CM, and CM3A : MODBUS range



The BELUK power factor control relays which have the –MB option integrated, have ability to be interfaced into a software via RS485 communication. The CM relay can be either single phase type of 3-phase sensing type as well.



The device can be configured and assigned its location identification via the SCADA software.

Process Technique Electronics Pvt. Limited

Email : relays@processtechnique.com

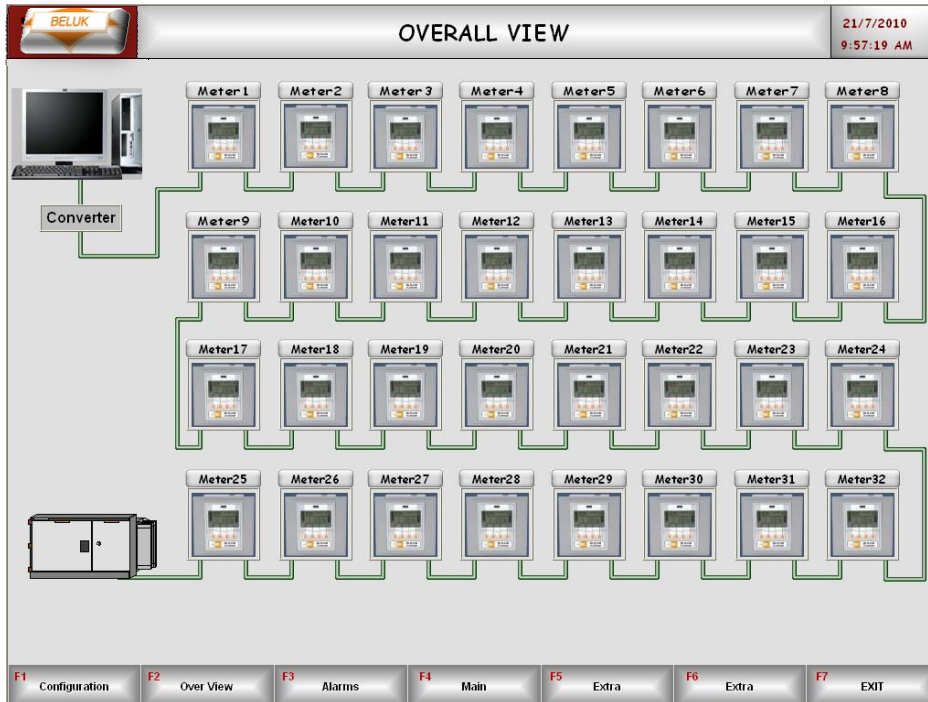
Phone +91 80 2522 8895

POWER QUALITY MANAGEMENT SYSTEM

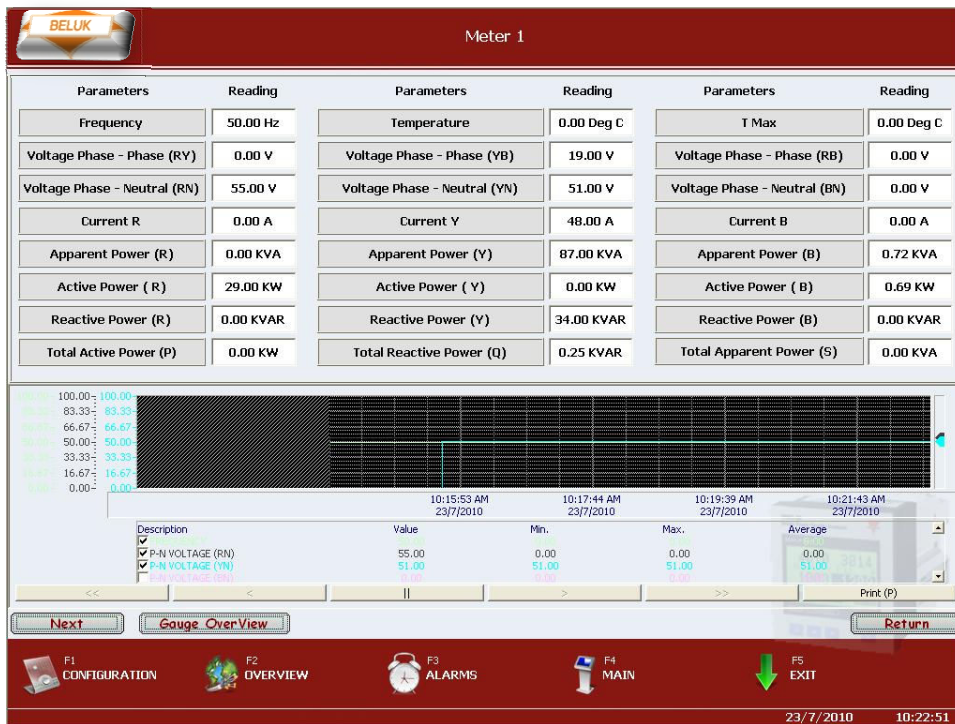
SCADA communication for BELUK BLR CM, and CM3A : MODBUS range

Many such CM devices (upto 32 on a wired MODBUS network) can be so configured, and this would be illustrated on the overall view of the SCADA software for easy information.

Any alarm conditions are also flashed on this screen.



POWER QUALITY MANAGEMENT SYSTEM
SCADA communication for BELUK BLR CM, and CM3A : MODBUS range

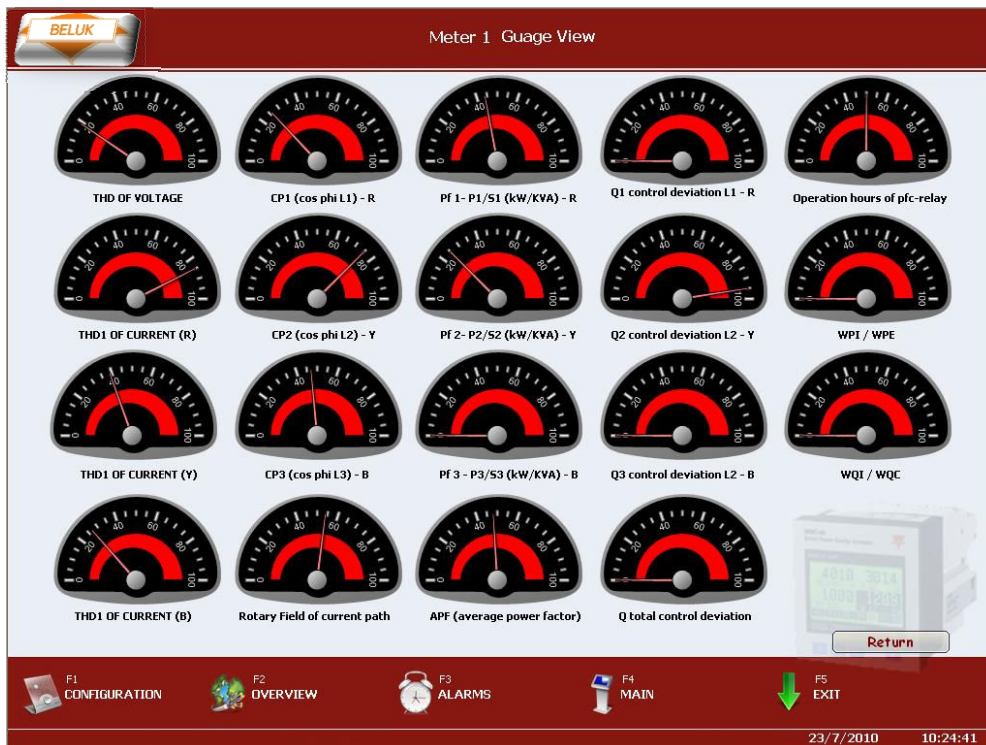


By selecting any particular CM / CM3A relay data to view, the user can get an, easy information of all major electrical parameters including :

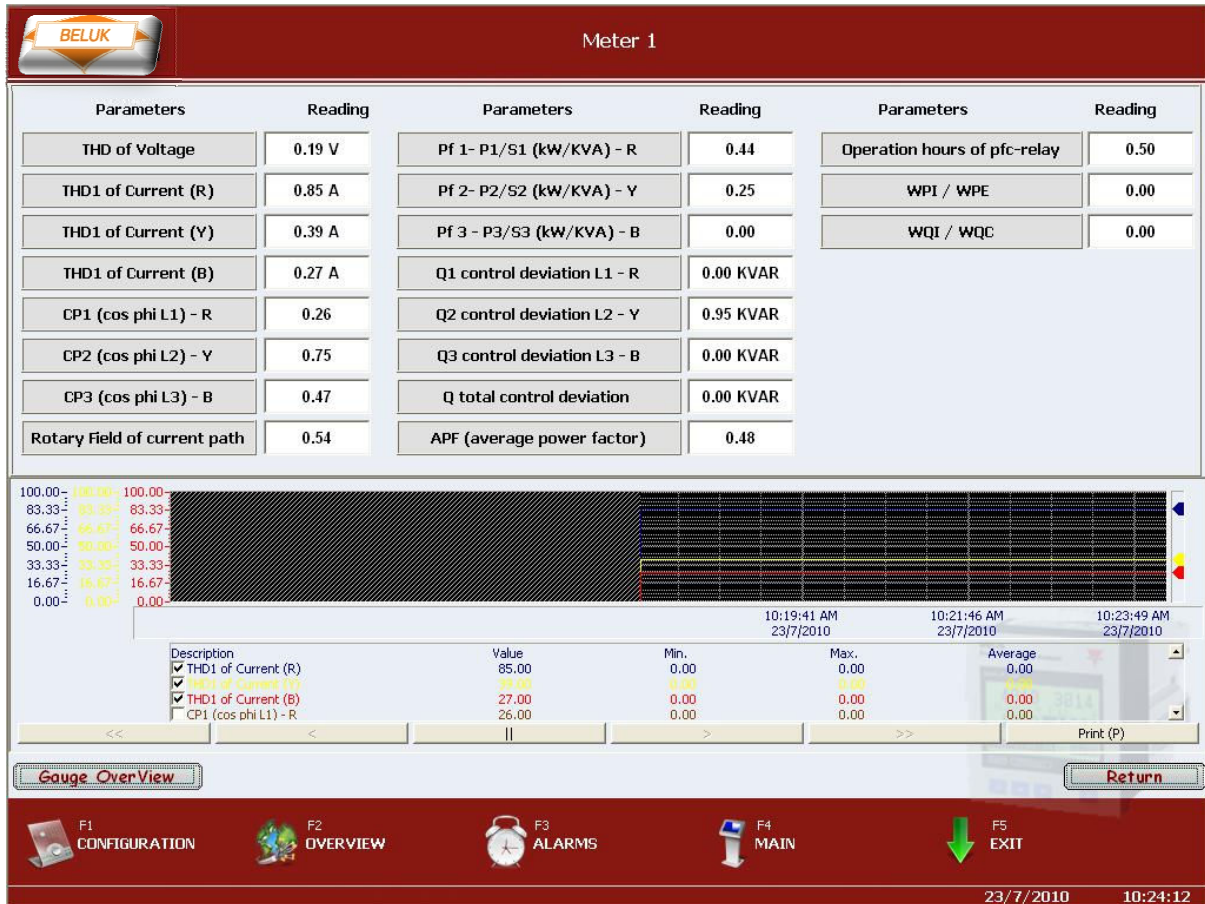
- a) Current
- b) Voltage
- c) KW
- d) KVA
- e) KVAR
- f) PF
- g) Frequency

...and more !

The information can be viewed as easy to read gauges on screen, for various parameters.



The alarm conditions would be registered : and also the phase wise PF and Cos-PHI information captured on screen.



The SCADA software can further store select parameters.

Generate reporting from this data.

Show graphical representation of all the harmonics values on voltage and current upto the 31st level

The step power – KVAR on each step can also be monitored, apart from seeing the number of switching operations per step on each connected CM / CM3A device

With special access, the individual steps can also be operated manually from the SCADA system